



Post Me!

2024 SEPTEMBER - DECEMBER CALENDAR

SASH  ESTD 2006
Coffee Time

No Cost to Attend

EAST PIERCE / PUYALLUP

No RSVP Needed

You're Invited ~ Connect With Your Elder Care Network!

Join us at Coffee Time, a networking opportunity for elder care providers in the East Pierce County / Puyallup area.

Come grow your referral network, share your services, connect with other professionals, and enjoy coffee and tasty treats.

Coffee Time is a favorite Puget Sound networking tradition, with over 1,150 events hosted since 2006!

2ND TUESDAY OF EVERY MONTH

Time: 9:00 - 10:30 a.m.

- ~ SEPTEMBER 10TH
- ~ OCTOBER 8TH
- ~ NOVEMBER 12TH
- ~ DECEMBER 10TH

JOIN US!

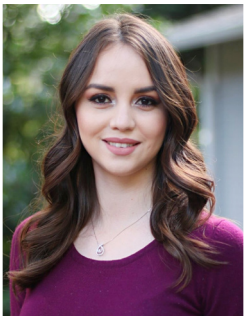
Want to be added to our email reminder list?
Write to: coffeetime@sashservices.com



Puyallup Recreation Center
Centennial Room (look for signs)
808 Valley Ave NW
Puyallup WA 98371



No RSVP ~ No Cost to Attend ~ Come As You Are ~ All Elder Care Providers Welcome!



Veronica Garcia
Realtor®
veronica@sashservices.com
520-508-8068



Thank You For Your Referrals!

Learn more about SASH:
www.sashservices.com
(206) 501-4375

Trusted by Puget Sound Elder Care
Providers since 2005